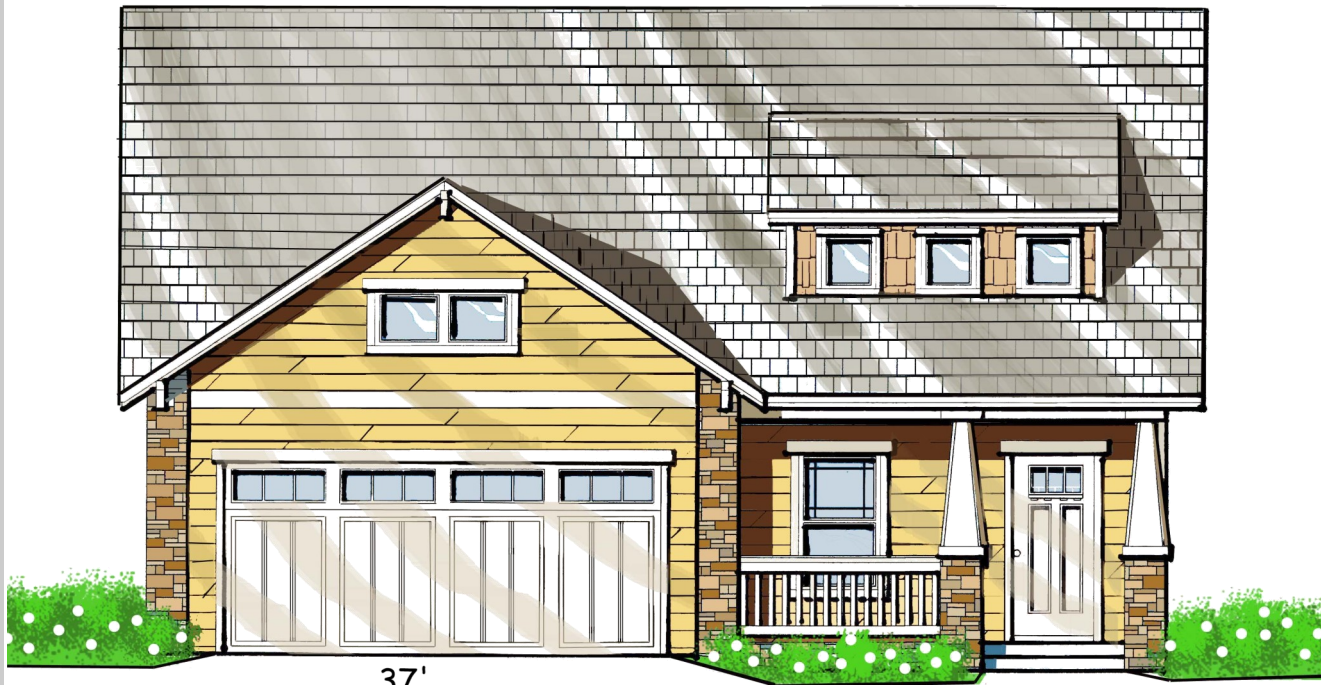
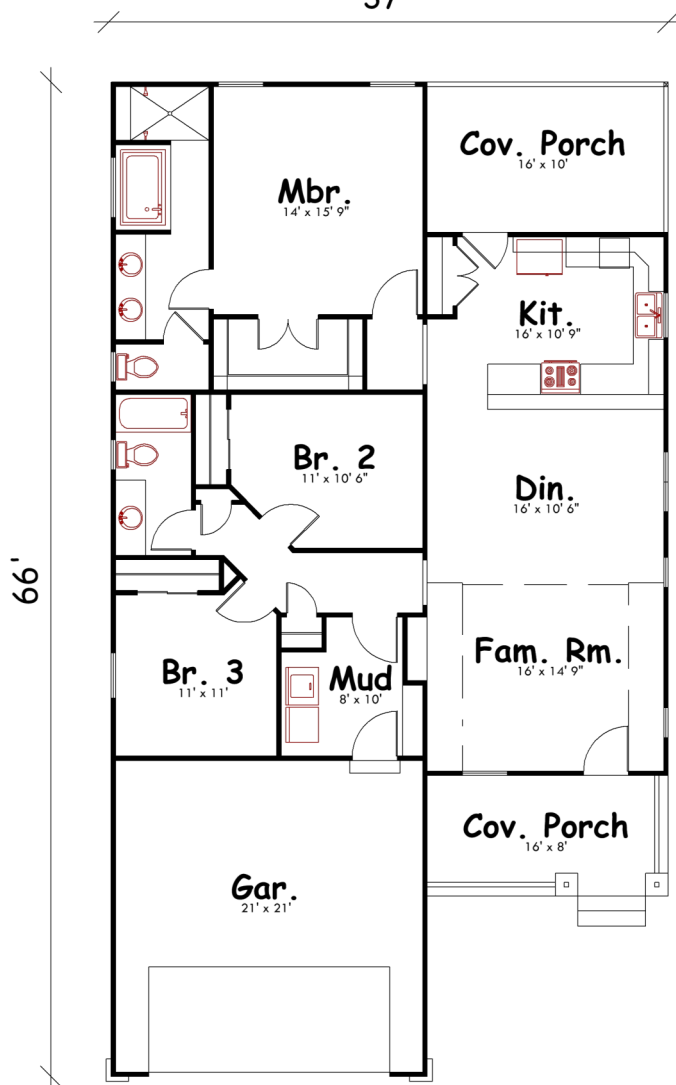


The Wright



37'



Heated/Cooled	1550	Sq. Ft.
Porches	188	Sq. Ft.
Garage	441	Sq. Ft.
Total	2179	Sq. Ft.

the village
at Rocky Ridge

A NEIGHBORHOOD OF CRAFTSMAN STYLE & CHARM

- 9' Ceilings
- Hardwood Flooring
- Tiled Bathrooms / Shower
- Masonry Columns
- Granite Countertops



the village at Rocky Ridge

A NEIGHBORHOOD OF CRAFTSMAN STYLE & CHARM

“Maintaining a responsibility to the future without forgetting the appeal of a simpler time and place...” That’s the design inspiration for the homes of The Village at Rocky Ridge.

The Wright

Like all the homes in The Village at Rocky Ridge, The Wright plan incorporates contemporary functionality with arts and crafts style. From the moment you enter the door you’ll find that this plan offers a generous amount of living space in this open, yet cozy design.

- Vaulted great room with natural light from shed dormer
- Generous front and rear porches
- Anderson 400 Series Casement Windows
- Hardwood floors
- Stainless steel appliances
- Designed with Energy Star Standards
- Built to NAHB Green Guidelines



Village
DEVELOPMENT GROUP, LLC